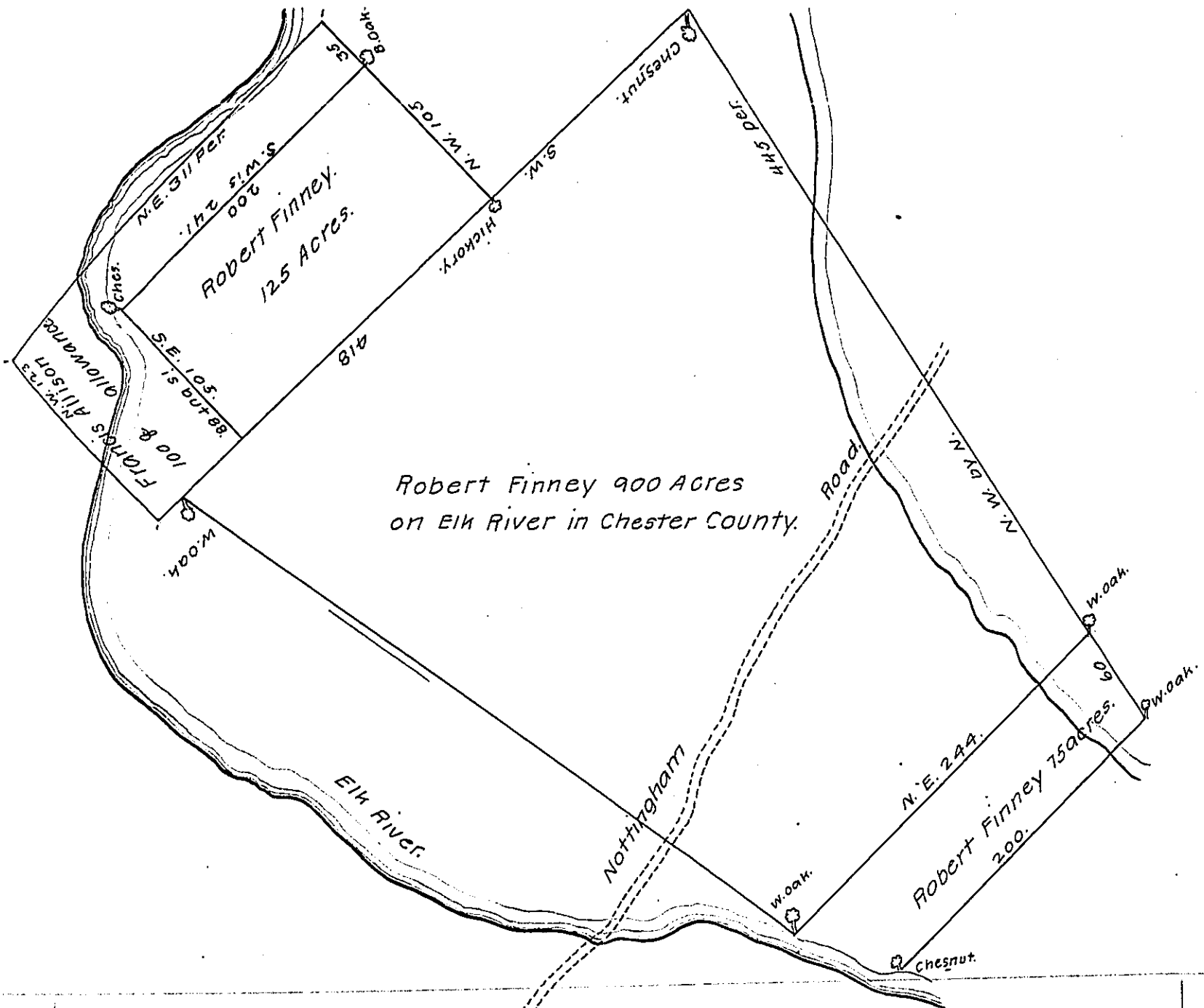


7th 1733.
y^e Proprietor
ought by Mic-
m²
w^{ch} if so please
, & forthwith
whole remain-
y^e Year 1720 so



The Tracts Contain 1100 Acres. The Tract of 900 Acres
 was surveyed the 14th of 8mo
 1714. The 200 was surveyed
 the 1st of May 1720.

Upon the Request of Robert Finney he is Allowed to hold the two
 of land added to each end of his tract of 900 acres which said two parcels
 parcels, contain together two hundred Acres as also about one hundred
 & fifty Acres to be laid out to him on the north East side of the Tract,
 he Applying to the proprietaries Office for a Regular Grant when the
 same may be had Philad^a 11, 2^{mo} 1727.

Jame Steel.

IN TESTIMONY that the above is a copy of the original remaining on file in
 the Department of Internal Affairs of Pennsylvania, made
 conformably to an Act of Assembly approved the 16th day of
 February, 1833, I have hereunto set my Hand and caused
 the Seal of said Department to be affixed at Harrisburg,
 this eighth day of November, 1907.

Henry Howell
 Secretary of Internal Affairs.